



## NEWS RELEASE

Contact: Harriet Redman, Executive Director  
WisconSibs, Inc.  
211 E. Franklin St.  
Appleton, WI 54911  
920-968-1742 920-450-2609 (mobile) info@wisconsibs.org  
Photos available  
Caregiving fact sheet attached

November 1, 2019

### Caregivers Honored by Wisconsin Siblings

Most people are surprised that eighty percent (80%) of Wisconsin residents who need long term care receive that support from family and friends at home, not in nursing homes or other facilities. **November is National Family Caregivers Month** and a great time to honor the more than 44 million Americans who care for a family member, friend, or neighbor.

This year Wisconsin siblings of people with disabilities honored family and professional caregivers with the WisconSibs Sibling's Choice Award at their annual Celebrate Sisterhood luncheon. The three winners were each nominated by siblings of people with disabilities.

- **Sara Wipperman, New Holstein**, received a *2019 WisconSibs Sibling's Choice Family Caregiver Award*. Sara cares for Wyatt, a young boy with disabilities and was nominated by Wyatt's sister, Anika. *"I nominated Sara because she helps us a lot,"* said Anika Lisowe, 9, a fourth grader at New Holstein Elementary School. *"Sometimes she helps Wyatt with his homework and when he gets mad she helps him relax with his dog Chrome."*

"Sara, who started with the family eight years ago when she was given the role of driving Wyatt to and from school, has seen not only Wyatt but also his siblings grow. *"I*

*feel like I need to be there for his siblings, too, because they are such a huge part of his success.”*

- Another family caregiver honored with a 2019 WisconSibs Sibling’s Choice Family Caregiver Award was **Andrene Busch, Neenah, WI**. Annabelle Busch, 13, a Shattuck Middle School eighth-grader and sister of Catherine, nominated her Aunt Andrene for the award. She says *“It is important to recognize people who care about your sibling. My aunt has a special relationship with my sister Catherine. She does a lot for Catherine. She’s really a good person that deserves this award for all the time and effort she puts into Catherine.”*
- Professional care is often a loving family’s best resource for support that allows an individual with disabilities to live to their fullest potential or provide a break for family caregivers. This year, the winner of the WisconSibs Sibling’s Choice Professional Caregiver Award was **Todd Steven & Associates, Menasha**, that provides daily care and community support for Phillip Redman, 27, of Appleton.

Phillip’s sister, Christiana Yablonowski nominated the organization. *“My parents, my husband, and I had been planning a two-week 40<sup>th</sup> wedding anniversary trip abroad for over a year and had all of the details planned, airline tickets purchased, hotels reserved, and plans for my brother’s care while we were gone. Unfortunately, we were told just a couple of weeks before the trip that Phillip’s reservation at a respite house could not be honored due to a shortage in staff.*

*Just when we thought we might have to cancel our travel plans, Todd Steven & Associates came up with a perfect solution; they developed a plan so my brother was able to be cared for in his own home, even continue his job and routine, by caregivers he knows well and who know him well. It was such a relief to us knowing that my brother*

*had a safe and comfortable care arrangement while we were gone. It is important that parents receive respite care so they are able to pursue things that are important to them and spend time with their other children. This trip was time for the four of us to travel, connect, and make wonderful memories that will last us the rest of our lives. I am so grateful for the peace of mind Todd Steven & Associates gave us all and how they always seem to be coming up with new ideas for how to integrate him into his community even further.” **Marc Quaintance and Todd Klauer** accepted the award on behalf of the staff of Todd Steven & Associates.*

This is the 11<sup>th</sup> year for the award presentation held during the annual Celebrate Sisterhood Luncheon every October. Nominations are accepted from brothers or sisters of individuals with disabilities. Nominations recognize either family caregivers or professional individuals, including service providers, physicians, attorneys, financial professionals, legislators and advocates who serve and support individuals with disabilities. The awards help siblings acknowledge and honor a caregiver’s contribution to the independence and quality of life of a person with a disability.

WisconSibs, Inc offers support to siblings of all ages in the Fox Valley and throughout Wisconsin through peer support programs, education and networking opportunities, social activities, future planning programs, and leadership development. For more information, go to <http://wisconsibs.org>

WisconSibs, Inc is a member of the **Wisconsin Family and Caregiver Support Alliance** to address the needs of family caregivers and help provide information to the Governor’s Task Force on Caregiving. For additional information and resources on supporting families and providing care for their loved ones, visit the Governor’s Taskforce on Caregivers at <https://gtfc.wisconsin.gov> and the Wisconsin Family and Caregiver Support Alliance (WFCSA) at <http://wisconsincaregiver.org/alliance>.

## RELATED FACTS:

### The State of Family Caregiving in Wisconsin

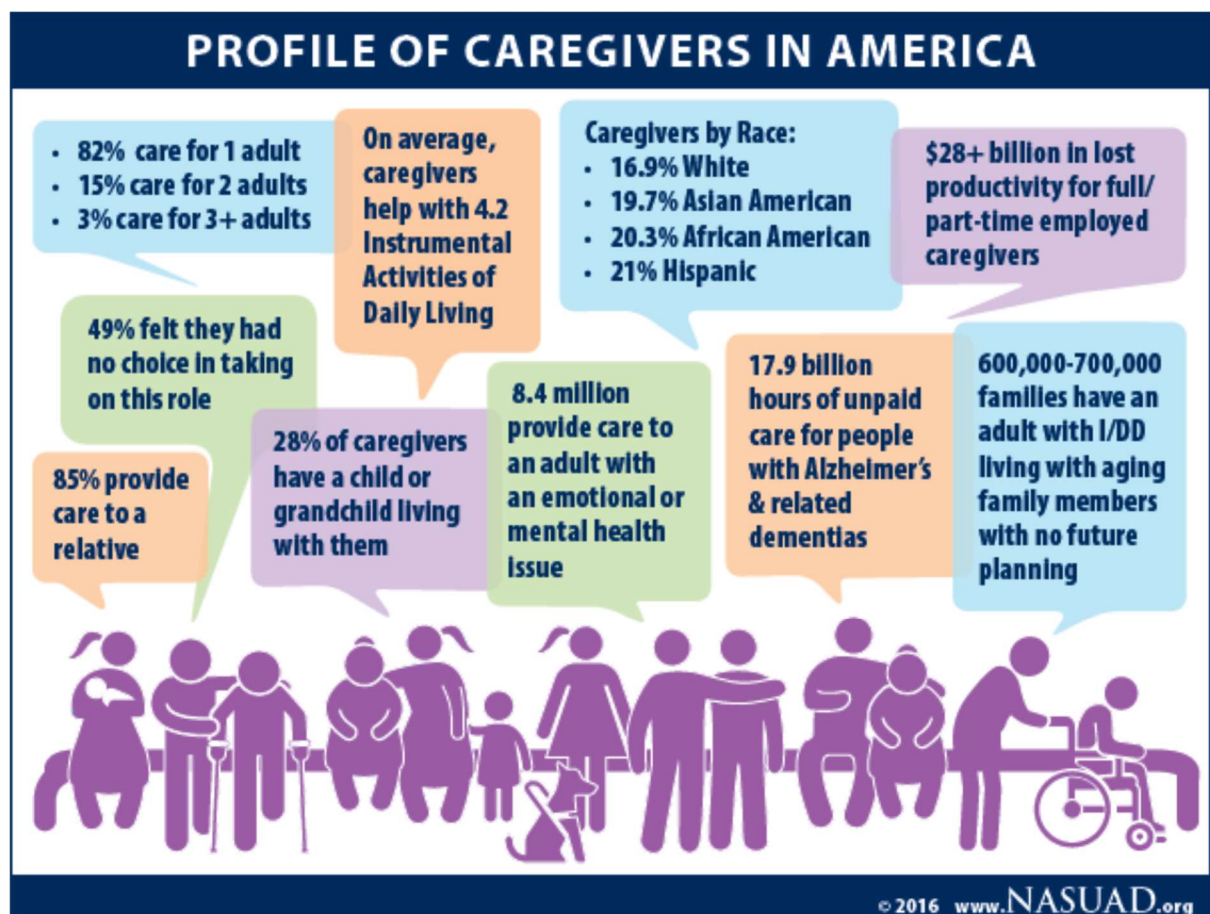
#### Definitions

A **caregiver** - sometimes called an **informal caregiver** - is an unpaid individual (for example, a spouse, partner, family member, friend, or neighbor) involved in assisting others with activities of daily living and/or medical tasks.

**Formal caregivers/Direct Care Workers** are paid care providers providing care in one's home or in a care setting (day care, residential facility, long-term care facility). For the purposes of the present fact sheet, displayed statistics generally refer to caregivers of adults.

#### Heavy Reliance on Family Caregivers in Wisconsin

In Wisconsin a shortage of formal caregivers or direct care workers has created a crisis for people with disabilities, older adults, and their families. The need for direct care workers is projected to increase by an additional 20,000 workers by 2026<sup>1</sup>. In 2016, a statewide survey of more than 500 people who rely on direct care services and their families found 85% did not have enough workers to cover all their shifts 60% said they get sick more often when they do not have enough staff<sup>2</sup>. Families are the backbone of the caregiving industry in Wisconsin, providing an estimated 80% of all care.



# Local Caregiver Feedback: The Family & Individual Needs for Disability Support Survey<sup>3</sup>

## How does caregiving affect employment?

- 92% caregivers reported going in late or leaving early because of caregiving responsibilities.
- 83% of respondents worked for pay outside of caregiving responsibilities in the 12 months prior to the survey.
- 71% of caregivers reported cutting back hours.
- 52% reported giving up working.
- 42% turned down a promotion.
- 36% did not take job opportunities that require moving out of state.
- 31% reported losing benefits.
- 21% received warnings about attendance or work performance.

## How is caregiving affecting parents?

- 98% report some level of stress. 50% are very or extremely stressed.
- 94% report challenges finding time for self-care.
- 91% report challenges balancing other family responsibilities.
- 83% report out-of-pocket expenses related to their family members needs of more than \$1,000 per year.
- 65% report challenges meeting their own health needs.

## What worries caregivers about the future for their family member?

- 93% worry the quality of support will go down if they are not there to advocate.
- 90% worry she/he will have to live somewhere she/he does not want to live.
- 86% worry she/he will not have enough friends and social activities.
- 85% worry she/he will have difficulty advocating for what she/he needs.
- 85% worry she/he will not be able to contribute to major life decisions or receive support for self-determination.
- 84% worry there is no one else to provide the support they are giving.
- 82% worry her/his health will deteriorate.
- 82% worry some form of abuse or neglect might occur.

1. State of Care: Wisconsin's Home Care Landscape. PHO. 2017. <https://phinational.org/resource/state-of-care-wisconsins-home-care-landscape/>

2. Survival Coalition Consumer Survey, November 2016. <http://www.survivalcoalitionwi.org/wp-content/uploads/2016/11/SurvivalSurveyFactSheet.pdf>

3. Family & Individual Needs for Disability Support Report 2017 (Institute. on Community Integration and The Arc of the United States)